

# PARKVIEW EMPLOYER CLINICS

## **Employee Information Guide**



**PARKVIEW**  
EMPLOYER SOLUTIONS  
EMPLOYER CLINICS



## WHY CHOOSE PARKVIEW EMPLOYER CLINICS

Your employer has partnered with Parkview Employer Clinics to offer high-quality healthcare services at no cost to you. By choosing a Parkview Employer Clinic, you gain access to a team of highly skilled healthcare professionals who practice a Lifestyle Medicine approach to provide you with personalized care to enhance your overall well-being.

## WHAT TO EXPECT WITH EMPLOYER CLINICS

Parkview Employer Clinics are reserved solely for the health and well-being of employees throughout northeast Indiana and northwest Ohio. Whether you require routine check-ups, preventive screenings, or treatment for acute ailments, our clinics are here to serve you. We ensure quality time with our experienced providers who listen to your concerns and create personalized treatment plans. Our streamlined scheduling and option for same-day and virtual appointments guarantees efficient and timely care. Our focus is you and our top priority is your health.

## ELIGIBILITY

Based on your employers contract, you, your spouse/partner, and dependents may be eligible to utilize our network of Employer Clinics. **Please check with your Human Resources department to verify eligibility.**



# CLINIC LOCATIONS

## ALLEN COUNTY

### Northeast Allen County Clinic

6505 E. State Street  
Fort Wayne, IN 46815

260-425-4960  
NEAllenEmployerClinic@  
parkview.com

#### **Clinic hours:**

*Mon. & Tues., 7:30 a.m. - 5 p.m.*  
*Thurs., 7 a.m. - 7 p.m.*  
*Fri., 7:30 a.m. - 5 p.m.*

### Northwest Allen County Clinic

3898 New Vision Drive, Suite C  
Fort Wayne, IN 46845

260-425-4050  
NWAllenEmployerClinic@  
parkview.com

#### **Clinic hours:**

*Mon. & Wed., 7:30 a.m. - 6 p.m.*  
*Tues. & Thurs., 7:30 a.m. - 5 p.m.*  
*Friday, 11:30 a.m. - 5 p.m.*

## KOSCIUSKO COUNTY

### Kosciusko County Clinic

1021 Mariners Drive  
Warsaw, IN 46582

574-372-1274  
KosciuskoEmployerClinic@  
parkview.com

#### **Clinic hours:**

*Wed. & Thurs., 8 a.m. - 4 p.m.*

## NOBLE COUNTY

### Noble County Clinic

1844 Ida Red Road  
Kendallville, IN 46755

260-347-8236  
NobleEmployerClinic@  
parkview.com

#### **Clinic hours:**

*Mon., 9:30 a.m. - 6 p.m.*  
*Tues., 7 a.m. - 7 p.m.*  
*Wed., 7:30 a.m. - 4 p.m.*

## WHITLEY COUNTY

### Whitley County Clinic

107 N. Walnut Street  
Columbia City, IN 46725

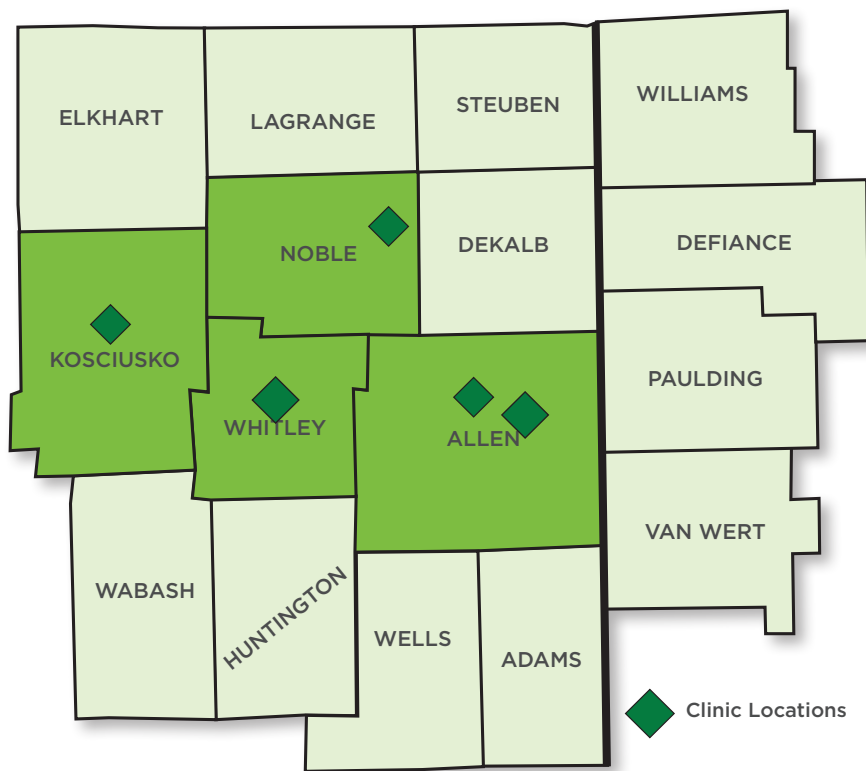
260-248-6003  
MarshallWellnessClinic@  
parkview.com

#### **Clinic hours:**

*Mon., Wed. & Fri., 7 a.m. - 11 a.m.*  
*Tues. & Thurs., 2 p.m. - 6 p.m.*



Scan the QR code or visit  
[Parkview.com/EmployerClinicsHub](https://Parkview.com/EmployerClinicsHub)  
for the most up to date list of  
locations and hours of operation.



## SCHEDULING AN APPOINTMENT

Schedule an in-person or virtual appointment. Same day appointments are often available.

Visit [Parkview.com/EmployerClinicsHub](https://Parkview.com/EmployerClinicsHub) or scan the QR code with your smartphone camera to schedule a visit at any of our Employer Clinics.



If you prefer to schedule via phone, please contact the clinic directly. You can also schedule an appointment via your MyChart account. Visit [Parkview.com/EmployerClinicsHub](https://Parkview.com/EmployerClinicsHub) for a short instructional video on how to schedule an Employer Clinic visit through MyChart.

## CLINIC SERVICES

Employer Clinic services are provided to you at no cost. You may visit any of our Employer Clinics for the following services:

- Diagnosis and treatment of most chronic health conditions (hypertension, diabetes, etc.)
- Acute/sick care visits (cold, flu, infections, headache, sprains, eye swelling/irritation, ear pain, minor allergic reactions, etc.)
- Annual exams and physicals (well woman exams, sport physicals, etc.)
- Basic in-office procedures (vaccinations, stitches, skin tag removal, lesions, etc.)
- Access to a medically supervised metabolic wellness program for health and weight loss.
- Access to specialized diabetes treatment team and services.
- Multi-disciplinary lifestyle improvement programs

**If you are experiencing serious injury, severe pain in any body part, chest pain, difficulty breathing, or a mental health crisis, please call 911 or visit an in-network facility.**





## LAB SERVICES

Each Employer Clinic is equipped with a lab to obtain blood draws, cultures, and/or urine collection to diagnose and monitor certain conditions. Lab capabilities include, but are not limited to:

- Comprehensive Metabolic Panel (sodium, creatinine, calcium, albumin, bilirubin, alkaline phosphatase, AST, ALT, chloride, blood urea nitrogen (BUN), globulin, and protein)
- Complete Blood Count
- Lipid panel (HDL, LDL, triglycerides, cholesterol/HDL ratio)
- Hemoglobin A1C (used to diagnose and monitor diabetes)
- Thyroid Stimulating Hormone (TSH)
- Prostate Specific Antigen (PSA)
- Vitamin and mineral deficiency (B12, D, folate, iron)
- Hormone deficiency (testosterone, estradiol, progesterone)
- C-Reactive Protein
- Throat culture
- Urinalysis
- Hepatic (liver) and Renal (kidney) Function Panel

Scheduled appointments for lab draws are preferred. Lab testing services are not available on virtual visit days. If obtaining labs for a provider outside of Parkview Health, please provide the Employer Clinic your lab requisition 24 hours prior to your appointment.

# MEDICATION FORMULARY

Employer Clinics have access to many of the most prescribed medications in generic form. Medications are provided to you free of charge. Medication categories include:

- Allergy/Asthma/Cold
- Antibiotic/Antifungal/Antiviral
- Diuretic
- Depression/Anxiety
- Diabetes
- Male Health/Female Health
- Migraine
- Osteoporosis/Arthritis
- Nutrition
- Gastrointestinal
- Hypertension/Heart Disease
- Lipid Management
- Eyes
- Topicals
- Musculoskeletal/Pain

# YOUR CARE TEAM

Embarking on a journey to health and wellness has its challenges, but your care team is here to provide the help, guidance, and support you need to achieve your goals and live a healthy fulfilling life. The team works collaboratively to ensure consistent and personalized support for every patient.

In addition to your care team, a physician medical director oversees the advanced practice providers and guides the clinical scope of practice. A clinic manager, clinic supervisors, and other support professionals oversee the day-to-day operations of the Employer Clinics.







## PREVENTIVE CARE COORDINATORS

We have a team of preventive care coordinators who may reach out to you based on your health status. Preventive care coordinators are registered nurses who guide you through appropriately paced care and tailor a personalized health and wellness plan, addressing both clinical and social needs. Preventive care coordinators provide support with the following:

- Patient education on health condition(s) and medication(s)
- Consult and collaborate with other healthcare providers to coordinate patient appointments and treatment plans
- Assist with the transition of care
- Weight management guidance and accountability
- Assess and monitor patient needs and goals
- Link to community resources
- Create a proactive care plan to address personal healthcare needs

**Questions? Reach out to our Preventive Care Coordinators at (260) 266-0264 or [PreventiveCareCoordinator@parkview.com](mailto:PreventiveCareCoordinator@parkview.com).**

# LIFESTYLE CHANGE SPECIALIST SERVICES

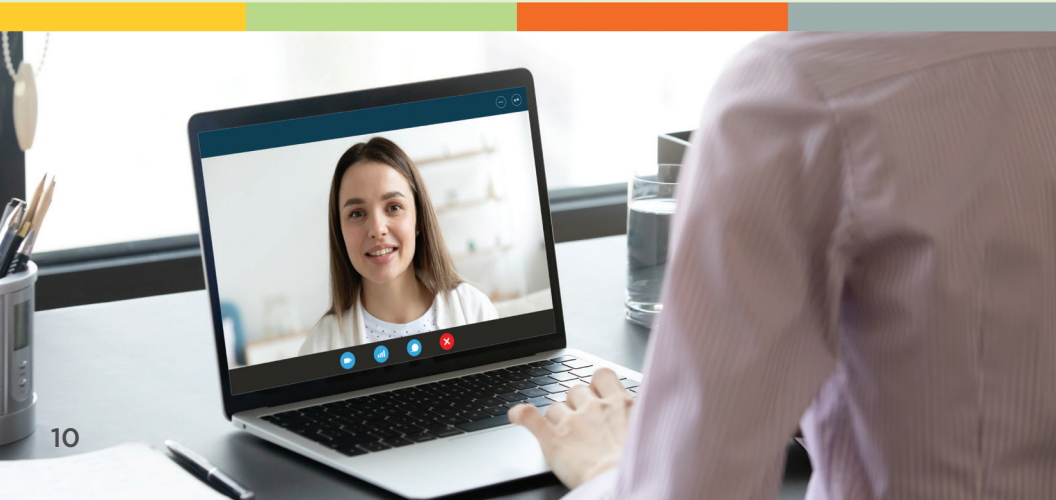
Our certified lifestyle change specialists can provide personalized support to help you meet your wellness goals. They work one-on-one with you virtually to help set goals, answer questions, and celebrate successes. With the support of a lifestyle change specialist, you can build confidence in your well-being while tracking and monitoring progress to help you reach the goals you wish to achieve. Your lifestyle change specialist is an expert in facilitating sustainable changes in mindset and behaviors.

Your lifestyle change specialist will start your journey by discussing your personal wellness goals and can provide guidance and education on the following topics:

- Physical activity
- Weight management
- Nutrition
- Stress management
- Healthy sleep habits
- Blood pressure
- Cholesterol
- Pre-diabetes & diabetes
- General health & wellness

If needed, your lifestyle change specialist can also refer you to our registered dietitian.

Your clinic care team may refer you directly to a lifestyle change specialist or you can contact [Coaching@Parkview.com](mailto:Coaching@Parkview.com) provide your name, company name, and request a specialist.



## WELLNESS RESOURCES

### Parkview Activities Calendar

The Parkview Activities Calendar is your go-to guide for a wide range of free wellness classes and programs developed by certified lifestyle change specialists and other Parkview specialists. Whether you desire to boost your fitness, improve your nutrition habits, manage stress, or enhance your overall well-being, you can attend in-person and virtual sessions on your own time.

The Activities Calendar can be accessed on the Portal Resource Center.

### Monthly Wellness Newsletter

The monthly wellness newsletter includes education on a specific health topic from our expert providers, tips and strategies to promote a healthier lifestyle, seasonal wellness tips, and more. Your employer should distribute the monthly newsletter. A digital version of the newsletter is available on the Portal Resource Center.



## PORTAL RESOURCE CENTER

The Portal Resource Center is a web-based portal accessible through a web link specific to your employer. Visit [Parkview.com/EmployerClinicsHub](https://Parkview.com/EmployerClinicsHub), scroll to the Activities Calendar and use the dropdown to find your company.



## SPECIALTY PROGRAMS

### Healthy You

Healthy You is a free\* 6-month program designed to combat metabolic syndrome through lifestyle improvements. Eligible employer clinic patients can self-refer to the program but may be recommended to participate by their clinic provider, preventive care coordinator, or lifestyle change specialist. Participation in the program is voluntary.

Throughout the six month program, you and your care team will work together to implement lifestyle changes and healthy habits to reduce your risk of chronic disease and live your most vibrant life. Healthy You incorporates the evidence-based, whole person practices of Lifestyle Medicine (nutrition, physical activity, stress management, toxin avoidance, social connections, and restorative sleep).

To learn more about Healthy You speak with your clinic provider or contact [Coaching@Parkview.com](mailto:Coaching@Parkview.com).

*\*You may be responsible for the cost of GLP-1 weight loss medications if this intervention is recommended as part of your care plan. GLP-1 medications are prescribed at the provider's discretion and on a case-by-case basis.*



## Diabetes Care Direct

Diabetes Care Direct (DCD) is a free program for eligible employer clinic individuals living with diabetes who are identified to participate in the program based on their health status. Participation in the program is voluntary.

The DCD program is designed to help ease the burden of managing your diabetes and find the best path to achieve your ultimate health and well-being.

Program participants will complete a series of tests and assessments over the course of two visits on a quarterly cadence. These include a retinal scan, blood work, InBody body composition analyzer, comprehensive diabetes assessment, provider visit, foot exam, nutrition therapy, lifestyle coaching, and referrals to additional services, as needed. Your diabetes care team will then work with you to develop a personalized plan to improve or maintain your health and help you reach your goals.

If you have questions about Diabetes Care Direct, contact our team of Preventive Care Coordinators at (260) 266-0264 or [PreventiveCareCoordinator@parkview.com](mailto:PreventiveCareCoordinator@parkview.com).

## PARKVIEW MYCHART

Parkview MyChart is a secure and confidential web-based system that allows you to communicate with your provider and access many of your healthcare records. Our Employer Clinic providers

use MyChart to ensure streamlined communication with you and your other Parkview Health providers. A MyChart account is not mandatory to utilize Employer Clinics, however it is encouraged.

**If you do not have a MyChart account, you can sign up at [MyChart.Parkview.com](https://MyChart.Parkview.com) or at any of our Employer Clinics.**





# 24/7 VIRTUAL CARE

Get the care you need, when you need it with Parkview Employer Solutions Virtual Care! Whether it's a minor illness or a non-emergent health concern, our virtual care service offers you convenient access to quality healthcare from wherever you are.

All eligible employer clinic members have access to virtual visits during normal clinic operating hours.

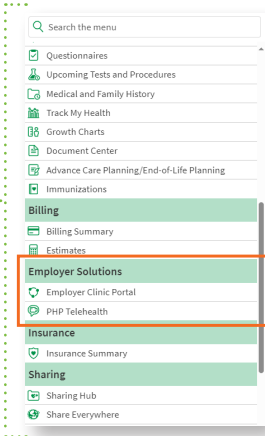
## 24/7 Virtual Care Eligibility

Access to 24/7 Virtual Care depends on your employer's specific contract with Parkview Employer Solutions. If 24/7 Virtual Care is an option for you, you will be given the option when scheduling an appointment and can access virtual visits 24 hours a day, 7 days a week, 365 days a year.

A Parkview MyChart account is required for access to 24/7 Virtual Care. A virtual visit can be scheduled at [parkview.com/virtualclinchub](https://parkview.com/virtualclinchub) or directly in MyChart.

## How to schedule via Parkview MyChart

Log in to your MyChart. Select the menu and navigate down to the "Employer Solutions" category. Select "Employer Clinic Portal." Select category A, B, or C, based on where your company is listed and follow the prompts.



## FREQUENTLY ASKED QUESTIONS

### **How much does it cost to visit an Employer Clinic?**

Your employer is offering access to Parkview Employer Clinics at no cost to you. This includes available clinic services, labs, and medications. Please check with your HR department to verify your eligibility.

### **Will my employer have access to my medical information and/or be notified of my use of the clinics?**

No. Our Employer Clinics follow the same privacy practices as Parkview Health. We are required by law to maintain the privacy and security of your health information.

### **Do you offer the medications I currently take?**

Contact your preferred employer clinic to further discuss our acute and chronic medication formulary with a provider.

### **Why visit an Employer Clinic instead of my primary care provider?**

Services at our Employer Clinics are offered to you at no cost and are not charged to your health plan. Our Employer Clinic providers partner with your primary care provider to ensure collaborative, comprehensive care. If your primary care provider is a Parkview provider, they will have access to your visit history and medical notes from your Employer Clinic visits. In some instances, our Employer Clinic provider may suggest you follow-up with your primary care provider or refer you to a specialist for further medical care.

### **Do the Employer Clinics accept walk-ins?**

We encourage scheduling an appointment as same day and virtual appointments are often available. You can also call your preferred Employer Clinic to see if they have availability on their schedule for that day.

Find more FAQ at [Parkview.com/EmployerClinicsHub](https://Parkview.com/EmployerClinicsHub).

